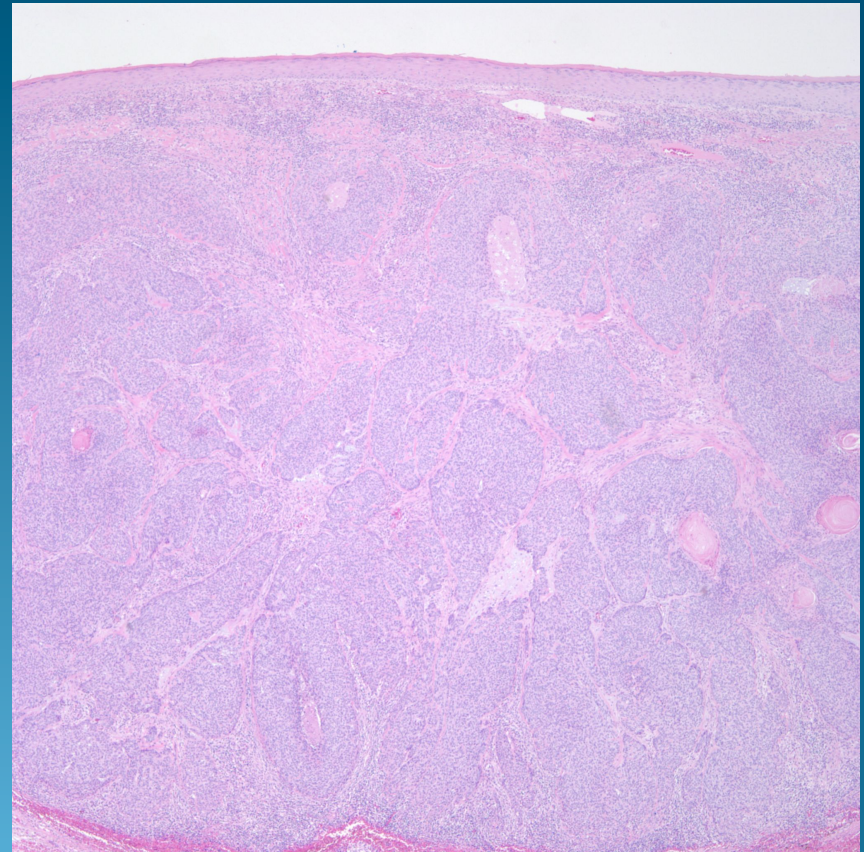
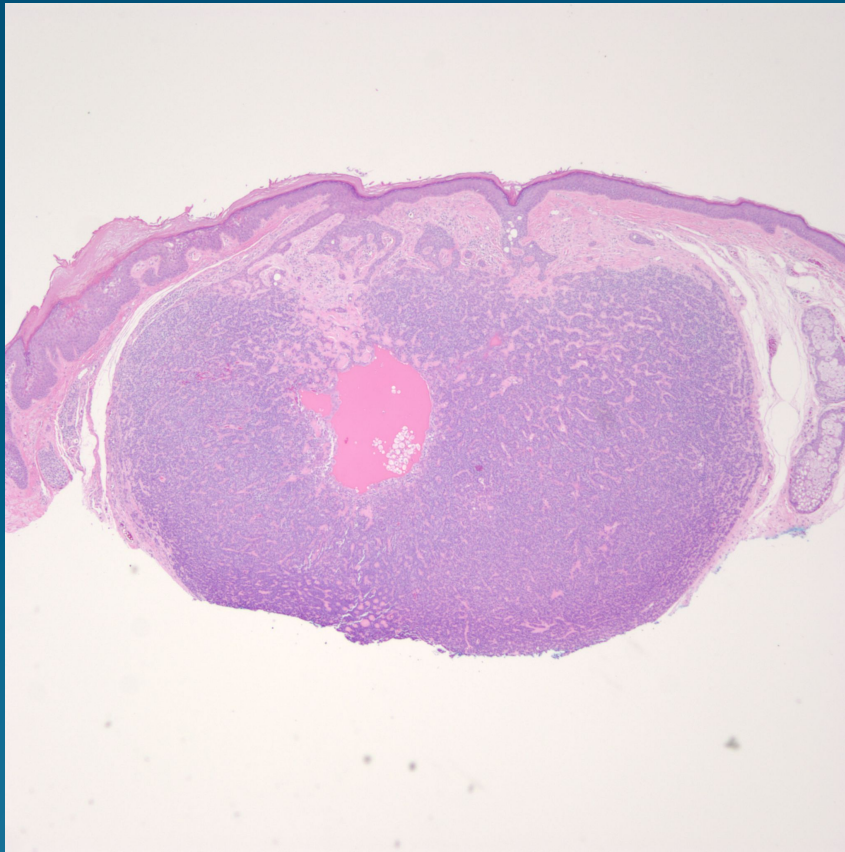
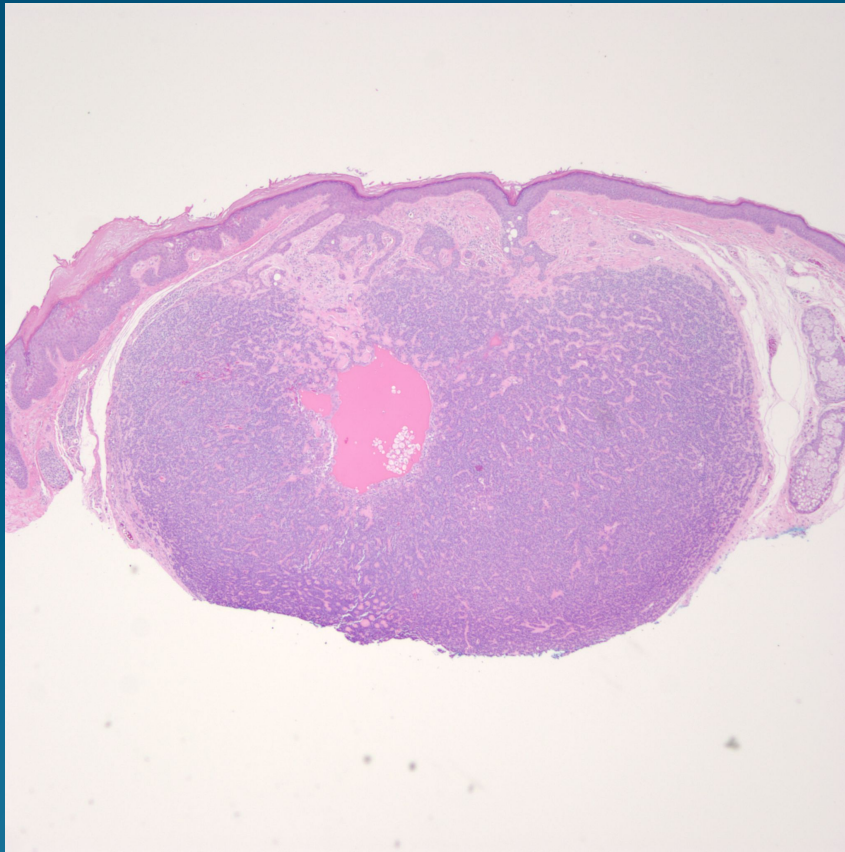


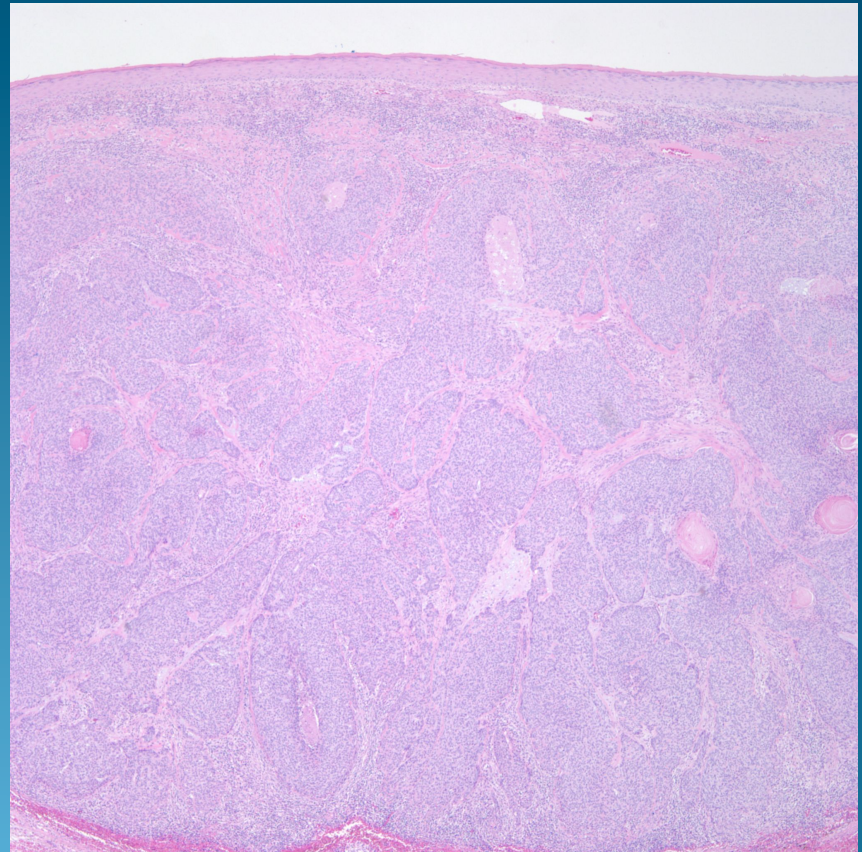
Spiradenoma or Basal Cell Carcinoma?



Spiradenoma



BCC



Key Differentiating Features

- Circumscribed dermal epithelial proliferation, usually no epidermal attachment
- Minimal cytologic atypia
- Fine vascular network
- Hyalinized basement membrane separating defined nests, usually no stromal-tumor retraction
- Focal epidermal attachment to basal epithelial layer
- Variable cytologic atypia
- Variable vascularity irregularly distributed throughout tumor
- Desmoplastic stroma separating irregular shaped nests, may have stromal-tumor retraction